

# AM102

## Ascent Modem - Multi-platform 5G Connectivity

The AM102 is an industrial strength 5G modem that delivers seamless, ultra-fast 5G and 4G/LTE cellular connectivity. With dual SIM flexibility, AM102 enables multi-network and high-speed internet access for users in fixed or mobile applications.

Supporting 4x4 MIMO with four individual SMA ports, external antenna installation allows for even more flexibility and performance improvements. This USB-C modem is a perfect add-on device to enable 5G connectivity on KonnectOS and KonnectOpen hardware

### Ultra Fast Throughput, Worldwide

Enable 5G connectivity on KonnectOS and KonnectOpen hardware with this capable USB-C modem add-on.

### 5G/4G LTE Cellular Modem

Kognitive Networks' AM102 5G Modem brings ultra-fast 5G and fallback 4G/LTE connectivity to a wide range of environments.



### Optimized Connectivity

C-Band support and carrier aggregation for up 120 MHz channel bandwidth



#### 5G Certified

Offers 5G connectivity with 4G/LTE fallback, ensuring consistent high-speed internet access in urban and remote locations - certified on US carriers.



#### Dual SIM

Features dual SIM slots and USB-C for data /power, compatible with Linux, Android, Windows 10/11, and EdgeOS



#### Optimized for High Throughput

Supports MIMO carrier aggregation for superior data transmission rates.

## Versatile and Portable 5G

### Compact and Durable

Rugged aluminum design with external antenna ports, Ascent Modem has removable feet and heatsink for mechanical mounting in tight locations

### Comprehensive Connectivity

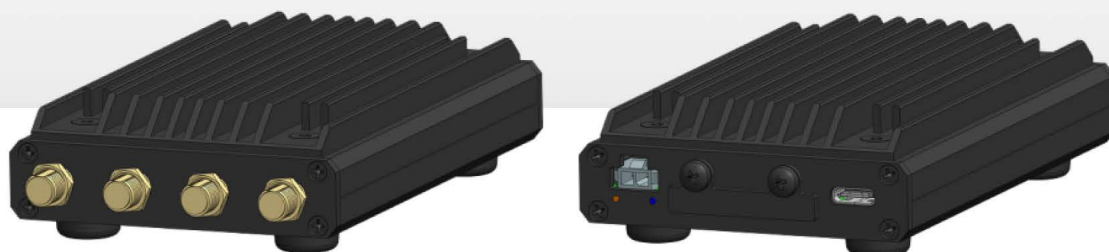
5G SA/NSA, 4G LTE with 4x4 MIMO

USB-C

Optional external power for remote installation

# Technical Specifications

<b>5G NR SA</b>	NR Bands	n1/n2/n3/n5/n7/n8/n12/n13/n14/n18/n20/n25/n26/n28/n29/n30/n38/n40/n41/n48/ n66/n70/n71/n75/n76/n77/n78/n79
	DL 4 x 4 MIMO	n1/n2/n3/n7/n25/n30/n38/n40/n41/n48/n66/n70/n77/n78/n79
	UL 2 x 2 MIMO	n38/n41/n48/n77/n78/n79
<b>5G NR NSA</b>	NR Bands	n1/n2/n3/n5/n7/n8/n12/n13/n14/n18/n20/n25/n26/n28/n29/n30/n38/n40/n41/n48/ n66/n70/n71/n75/n76/n77/n78/n79
	DL 4 x 4 MIMO	n1/n2/n3/n7/n25/n30/n66/n38/n40/n41/n48/n70/n77/n78/n79
<b>LTE</b>	FDD Bands	B1/B2/B3/B4/B5/B7/B8/B12/B13/B14/B17/B18/B19/B20/B25/B26/B28/B29/B30/B32/B66/B71
	TDD Bands	B34/B38/B39/B40/B41/B42/B43/B46(LAA)/B48
	DL 4 x 4 MIMO	B1/B2/B3/B4/B7/B25/B30/B38/B40/B41/B42/B43/B48/B66
<b>WCDMA</b>	Bands	B1/B2/B4/B5/B8/B19
<b>GNSS</b>	RX Bands	GPS/GLONASS/BDS/Galileo/QZSS



Cellular WAN Interface	5G SA / NSA, 4G LTE – 4x4 MIMO, 3GPP Release 16
SIM Slots	2x nano SIM
Throughput	Peak DL/UL Mbps: 5G NSA 3400/550, 5G SA 2400/900, LTE 1600/200 -- CAT-19/CAT-18
Connectors	4x SMA-F Cellular, 2-pin Molex External Power, USB Type C
Power & Data	USB3.2, backwards compatible with USB2.1 [Optional External Power: +9 VDC to +24 VDC]
Power Consumption	5W nominal, 8W max
Physical	113.4mm x 67.3mm x 27 mm / 4.5" x 2.75" x 1.1" – 0.45 lbs / 200g
Environmental	Operating temp: -10 to +50 C; Humidity up to 95%, non-condensing
Certifications	CE, FCC, RoHS, PTCRB
US Carrier Certifications	Certified for use on ATT, T-Mobile, Verizon
Warranty	1-year limited, extended warranty available

